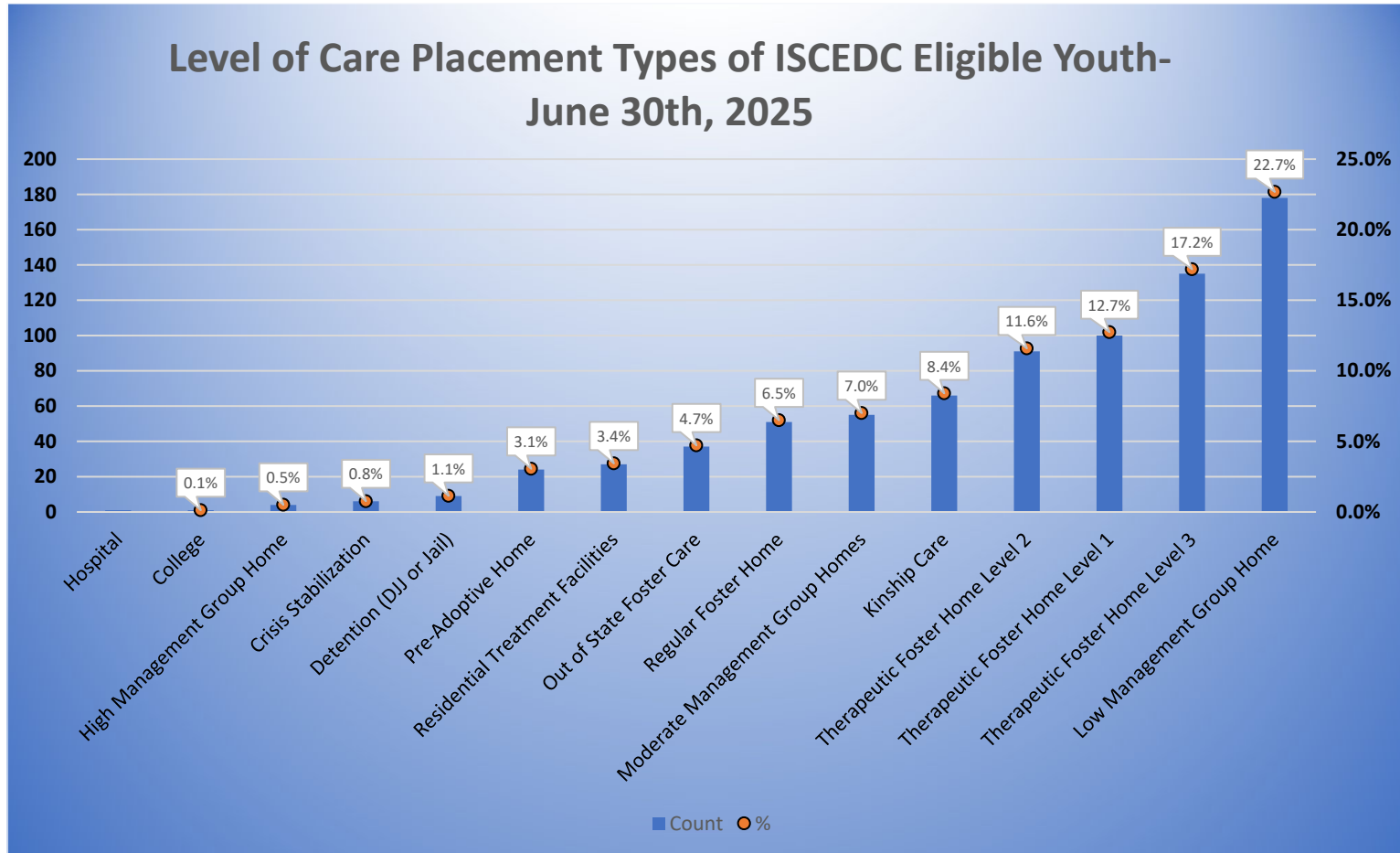


Local interagency staffing teams identify the foster children who have significant **emotional or behavioral issues**, requiring them to need a therapeutic placement and special services paid with **ISCEDC funds** (funds which are provided from several state agencies). The chart below tabulates the placement type for each ISCEDC eligible youth on June 30th, 2025. Person funding eligibility data and CMACC data are used to identify ISCEDC funding eligible children and their level of care placement types.



Data: SCDSS - (Jul 1, 2025); Design: SCDSS - Accountability, Data, and Research Division