



How do I apply for SNAP?

- Obtain a SNAP application from any DSS office.
- You may also apply online at: <https://benefitsportal.dss.sc.gov>.
- If you need help with completing the application, a DSS worker can assist you.
- If you need an interpreter or translated materials, please ask for help at any DSS office.
- Make sure you print your name, address, and sign the application.
- Mail, email, fax, or take the application to any DSS office.

Questions

- If you have questions about SNAP or about your eligibility, please contact us.
- We can also give you valuable information about Temporary Assistance for Needy Families (TANF).
- If you need further assistance, you may contact any DSS county office or DSS Connect at 1-800-616-1309.

In accordance with federal civil rights law and U.S. Department of Agriculture (USDA) civil rights regulations and policies, this institution is prohibited from discriminating on the basis of race, color, national origin, sex (including gender identity and sexual orientation), religious creed, disability, age, political beliefs, or reprisal or retaliation for prior civil rights activity.

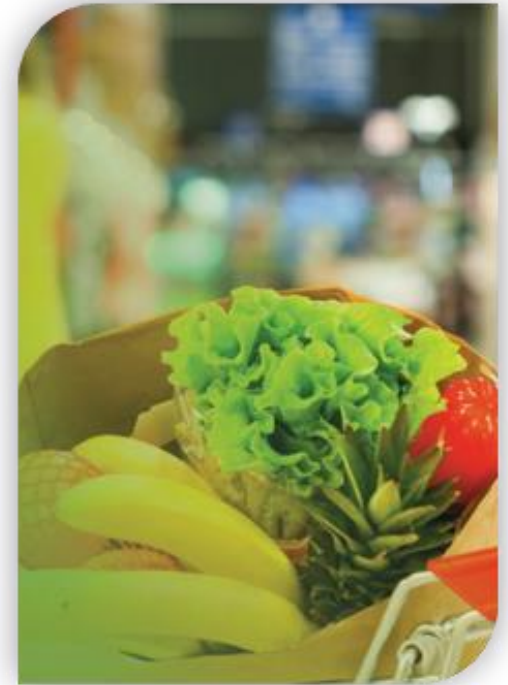
Program information may be made available in languages other than English. Persons with disabilities who require alternative means of communication to obtain program information (e.g., Braille, large print, audiotope, American Sign Language), should contact the agency (state or local) where they applied for benefits. Individuals who are deaf, hard of hearing or have speech disabilities may contact USDA through the Federal Relay Service at (800) 877-8339.

To file a program discrimination complaint, a Complainant should complete a Form AD-3027, USDA Program Discrimination Complaint Form which can be obtained online at: <https://www.usda.gov/sites/default/files/documents/ad-3027.pdf>, from any USDA office, by calling (833) 620-1071, or by writing a letter addressed to USDA. The letter must contain the complainant's name, address, telephone number, and a written description of the alleged discriminatory action in sufficient detail to inform the Assistant Secretary for Civil Rights (ASCR) about the nature and date of an alleged civil rights violation. The completed AD-3027 form or letter must be submitted to:

1. **mail:**
Food and Nutrition Service, USDA
1320 Braddock Place, Room 334
Alexandria, VA 22314; or
2. **fax:**
(833) 256-1665 or (202) 690-7442; or
3. **email:**
FNCSIVILRIGHTSCOMPLAINTS@usda.gov
This institution is an equal opportunity provider.

You may also file a complaint of discrimination by contacting DSS. Write DSS Office of Civil Rights, P.O. Box 1520, Columbia, S.C. 29202-1520; or call (800) 311-7220 or (803) 898-8080 or TTY: (800) 311-7219.

DSS Brochure 3333 (JUN 24)
Edition of OCT 23 is obsolete.



**SUPPLEMENTAL
NUTRITION
ASSISTANCE
PROGRAM (SNAP)
CAN HELP!**

DSS
SOUTH CAROLINA
DEPARTMENT *of* SOCIAL SERVICES



What is SNAP?

SNAP is a supplemental program that helps you buy food for your household. SNAP is designed to promote the general welfare and to safeguard the health and well-being of the Nation's population by raising the levels of nutrition among low-income households.

What is the benefit of receiving SNAP?

SNAP permits low-income households to obtain a more nutritious diet, through normal channels of trade, by increasing food purchasing power for all eligible households who apply for participation.

Can I receive SNAP if I am working?

Yes, if you and/or any household member are working and the household income from work and any other source(s) is below the income limit for the household size.

Can I receive SNAP if I am not working?

Yes, if you and/or any household member are not working and the household income from other sources (if any) is below the income for the household size.

However, for an Able-Bodied Adult Without Dependents (ABAWD), SNAP eligibility is time limited to any three months in a 36-month period, in which the ABAWD is subject to, but not complying with, the ABAWD work requirement, or is otherwise exempt.

What if I am elderly or disabled and cannot work?

Any household member who is age 60 or older or has a documented disability will meet an exemption from work requirements and may qualify for a medical deduction.

How do I use SNAP benefits?

Your household will receive an Electronic Benefit Transfer (EBT) card to use at the grocery store to purchase approved food items only.



What are the income limits?

Household Size	Gross Monthly Income Limit (130% of poverty)	Net Monthly Income (100% of poverty)
1	\$1580	\$1215
2	\$2137	\$1644
3	\$2694	\$2072
4	\$3250	\$2500
5	\$3807	\$2929
6	\$4364	\$3357
7	\$4921	\$3785
8	\$5478	\$4214

(add \$557 to "gross income" for each additional person)

Note: For households which contain an elderly or disabled member, these income limits may not apply.

What information needs to be submitted with my SNAP application and/or during my interview?

Your SNAP application should include as much information related to your household's monthly expenses and income as possible and should include information for all members of your SNAP household. Your SNAP application is considered valid as long as it contains the applicant's name, address, and the signature of a responsible household member or the household's authorized representative. The Agency will attempt to verify all information during your SNAP interview. The Agency may request additional information from the household in the event that the information you provided cannot be verified during the interview.