

Resources



Supplemental Nutrition Assistance Program (SNAP)

Income-based program that provides food assistance to families in need.

1-800-616-1309
www.scmapp.sc.gov



Temporary Assistance for Needy Families (TANF Child Only)

Offers monetary assistance to kin families with a blood-related child under 18 in their home. TANF Child Only is not income-based.

1-800-616-1309
Or visit your local DSS office



SC Voucher Program

Provides financial assistance to help eligible families pay for childcare or care for children with special needs.

1-800-476-0199
www.scchildcare.org



Medicaid

Offers health insurance benefits for children 21 and younger.

1-888-589-0820
www.scdhhs.gov



Women, Infants, and Children (WIC)

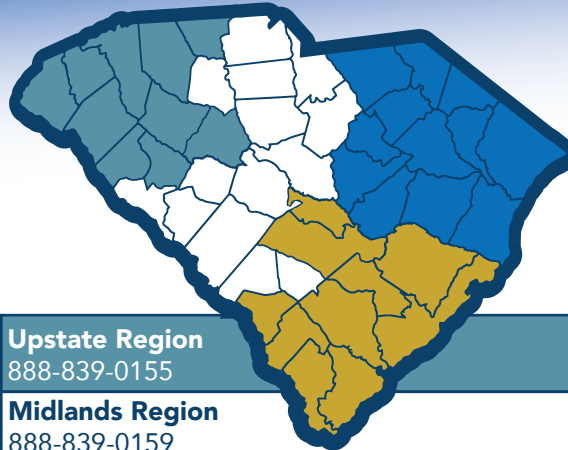
Provides vouchers for healthy food purchases for pregnant women and children under 5.

1-803-898-3432
www.scdhec.gov/health/wic

Coordinators

Looking for help navigating your role as a Kinship Caregiver?

SCDSS Kinship Care Coordinators are here to help! They can provide information about local resources that can support you and your kin. Each SCDSS region has a Kinship Care Coordinator available to answer your questions. Contact the Coordinator in your region today!



Upstate Region
888-839-0155

Midlands Region
888-839-0159
888-839-0157

Pee Dee Region
888-854-4317

Low Country Region
888-854-4277

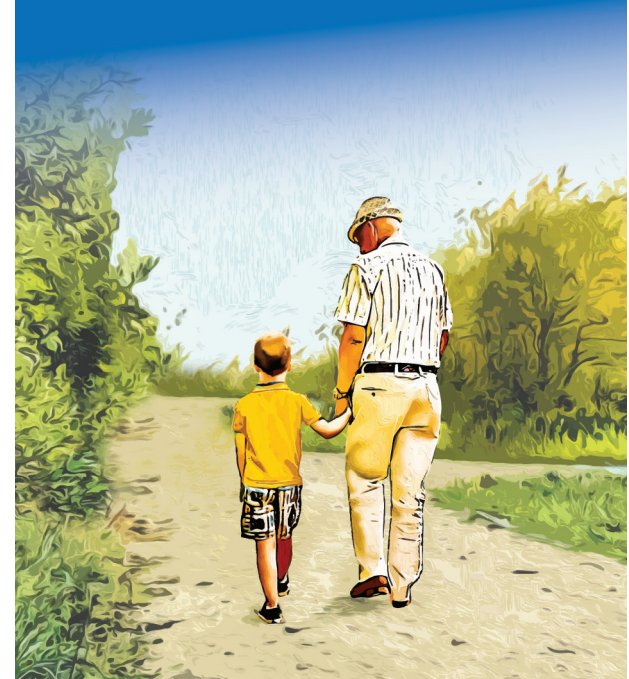
**Competence • Courage
Compassion**

DSS Brochure 37144

KINSHIP CARE

dss.sc.gov/kinshipcare

**Loved ones stepping
in when children
need them most**



DSS SOUTH CAROLINA
DEPARTMENT of SOCIAL SERVICES

What is Kinship Care?

When parents are unable to provide for their child's basic needs, relatives or family friends often step in to ensure the child receives full-time care. Kinship Care is any of these arrangements, temporary or permanent.

Kinship Care is intended to be a temporary support for families and not a permanent plan. Our goal is to reunify children with parents.

Who is a Kinship Caregiver?

A Kinship Caregiver may be a grandparent, aunt, uncle, neighbor, family friend, godparent, or others who have strong bonds with the children under their care.

Kin can be related by blood, marriage, or adoption. Or they can be "fictive kin." Fictive kin are people emotionally significant to the child but are not otherwise related to them.



Why Kinship Care?

Living under a Kinship Care arrangement is often the best option for children who cannot live with their parents. Kin caregivers can minimize the trauma children may experience being removed from their homes. With kin, children can more easily maintain their relationships with their communities and cultures.

Kinship Caregivers are one of South Carolina's greatest resources. They are dedicated to providing support for children and families.

Our Mission

Serve South Carolina by promoting safety, permanency and well-being of children and vulnerable adults, helping individuals achieve stability and strengthening families.

This mission is accomplished through the core principles of competence, courage and compassion.

